

## Andrews Farm Update

The Town of Falmouth is now the official owner of the Andrews Farm and Jeff Andrews will continue to work the land for at least another year. Traditions will continue: pick-your-own strawberries, abundant produce at the farm stand, pumpkins in the fall. We encourage everyone to visit the beautiful farm! Also make sure to take a walk to T3C's land behind the farm that overlooks the Coonamessett River. A key portion of the



Coonamessett Greenway, trails here connect to protected lands to the north and south.

*Jeff Andrews' tractor is primed and ready for spring operations at the farm.*

## Girl Scouts and T3C

This spring, T3C's Stewardship Coordinator Alexandra Zollo has been involving local girl scouts in T3C projects.

- Members of Daisy Troop #82179 and Brownie Troop #62640 worked to create three bird boxes to help expand our Kestrel Program. They helped install one of these kestrel boxes at the Andrews Farm and in early July will assist with the banding of new kestrel chicks.



*Girl Scouts proudly display the kestrel boxes they helped build...*

*...taxi the kestrel box and pole to the launch site at Andrews Farm...*



*...and help install the kestrel box at the farm.*

- Junior Troop #62754 has developed a Pollinator Partnership with T3C and the Friends of Mashpee National Wildlife Refuge. With the scouts' help, we expect to begin creating the Teaticket Park Pollinator Habitat Area later this spring.

## Coming Soon!

- Stewardship Volunteer Appreciation Picnic:** Friday, June 8<sup>th</sup>, 4:30 to 6:30 pm (Rain date: Saturday, June 9<sup>th</sup>, 11 am to 1 pm). T3C plans to recognize and celebrate the many volunteers who help maintain our cherished conservation lands. Stay tuned!
- T3C's Annual Meeting...**Mark your Calendar! The 2018 annual meeting will be held on Thursday evening, July 19<sup>th</sup>, with the social hour starting at 6:30 pm. We will again be hosted by the Portuguese-American Association of Falmouth, at their Navigator Clubhouse, Ashumet Road (off Sandwich Road) in East Falmouth. Be on the lookout for more details.
- Falmouth Road Race** The 45<sup>th</sup> New Balance Falmouth Road Race will be held on Sunday, August 19, 2018. T3C seeks runners who want to run this year's 7-mile course and support T3C at the same time. We have 12 bibs available through the Numbers for Non Profits program. Please visit our website or contact the office for additional information.

## Teaticket Park Plan Nears Completion

The final element of Teaticket Park—the outdoor classroom—is under construction; its installation will complete the park plan and bring the community's vision for the park to fruition. Designed by landscape architect Tom Lee (TL Studio, Falmouth) and built by Grafton Briggs (Grafton Briggs Landscaping), the classroom is located at the back corner of the park near the border with Teaticket Elementary School. With decks built of hardwood and edged with granite curbing, the classroom fits into the park's hillside with an expansive view of the wetland. T3C hopes that this outdoor learning area, which can accommodate about 50 youngsters, will be used by many Falmouth school groups and others who wish to enjoy and learn about the park's wonderful natural resources.

Three colorful and informative educational display panels were installed across the park property alongside the pathways in February. The first is situated in the streetscape, close to the park entrance and parking lot, and provides a brief history of Teaticket. Toward the center of the park along the meadow path is the second panel that highlights the three main habitats of the Park: grassland, wetland and woodland. The third panel, featuring wildlife, stands at the edge of the boardwalk with a



*Wildlife panel in place facing the wetland at Teaticket Park.*

view across the wetland, where ducks and other birds are often spotted. George Lawrence of Sketchbook Studio in Santa Fe, New Mexico, guided T3C through the design and fabrication of these educational signs. George and his wife, Michele, visited Falmouth last summer, and enjoyed a walk through the park on a beautiful sunny day.



157 Locust Street  
Falmouth, MA 02540-2658

### GIFTS IN MEMORY OF...

- ♥Harry Bowen from Will Clarke & Lyn Brady Clarke
- ♥Robert Dill from Elizabeth Dill & Eric Enge
- ♥Howard F. Ellis from Carole Boughter, Mark Ellis, Stephen Day Ellis, Jo & Bill McConaghy, Stephen Osterhout
- ♥George Hampson from Tom & Janet Chadie
- ♥David Hayden from Deborah Hayden, Nan Logan
- ♥John E. Lennon III from Kathleen Lennon
- ♥Elsa J. Lundgren and Alexander I. Lewis III from Gretchen Lewis
- ♥Jane Carroll McCormack from Richard & Paula Tredeau
- ♥Sally Morner from Carolyn Morner Hummer
- ♥Josephine Muller from Nancy Church, Ellen Goldstein, Gerald Orlando, Edward & Mary Orlando, Joanie Orlando-Herskovits, Denise Rapoport, Jay Schecker, Janet Walters
- ♥Stephen O'Brien from Alfred & Roberta Stimpson & family
- ♥Nancy Peterson from Walter Peterson
- ♥Carol Powers from Michael & Nancy Bridges
- ♥Philip Swing Robinson from Carl & Brenda Barney, Alice Blodgett, Shirley Bruce, Elizabeth Campanella, Joshua & Martha Dobyns, Robert & Kathleen Dunn, Robert H. Hollowell III, Penelope Hare, Waldo & Barbara Hart, Elizabeth P. Heald, Alan & Pamela Henrikson, Tom & Robin Jackson, Debby & Pete Jones, Richard & Beth Lepping, Margaret M. Lilly, Elizabeth Listerman, Peter & Olga Mitchell, Laura Morgan, Andrew Myers, Robert & Beverly Nason, John Norton, Robert & Rita Ottaviano, Joan Partridge, Peter & Gretchen Partridge, Samuel Perry, Dan & Claudia Quinn, Sylvia Stevens, Frederic Taylor, Frederick Thrasher & Jay Sharp, Stephen & Virginia White, James P. Whittiers III, Belvidere Plains Association, the Grand National Curling Club of America
- ♥John and Anita St. Clair from Francis Lovell
- ♥Elliot Rosenberg from Paul Rosenberg
- ♥Beth Schwarzman from Bob McIntire
- ♥Beth & Gary Schwarzman from Wallace & Pamela Stark
- ♥Gay Sullivan from Gordon Sullivan & Elizabeth Sullivan
- ♥Elaine Tripp from David & Nancy Babin
- ♥Kate Heery Tulchin from Joseph Tulchin
- ♥Helen M. Walden from Paul & Robin Ketchum
- ♥Cleveland & Helen White from Allison Brewster White
- ♥Mary & Red Wright from Paul & Pamela Steudler
- ♥Yvonne from Werner & Barbara Deuser

### GIFTS IN HONOR OF...

- ♥Jayne Abbott from Alexander Abbott & family, Sarah Schmitt
- ♥Nicole and Jon Goldman from Mary Goldman
- ♥Susie Goodman Hallstein from Peter & Joan Boyer, Alison Leschen & Scott Lindell
- ♥Alex Heintz's 10<sup>th</sup> birthday from Suzanne Thomas & Juan Pablo Canales, Tim Verslycke & Patricia Pinto DaSilva
- ♥Leonard Johnson from Jerry & Barbara Fanger, Alison Leschen & Scott Lindell
- ♥Peter Kroll from George & Marjorie Yost
- ♥Ann Menashi from Pamela Mansfield, Kari-Lise Richer, Marian Richter
- ♥Bob & Barbie Muldoon from Paul & Elizabeth Hughes
- ♥Robert Bradley Richards, Sr. from Jill Neubauer
- ♥Sue Smith from Phil & Kathy Wessling
- ♥Greg Souza from the Dolotta Family
- ♥William Traylor from Joseph Wisniewski
- ♥Linda & Gary Walker from Frank & Erika Messmann

### GIFTS TO TONY ANDREWS FARM IN MEMORY OF...

- ♥Tony & Marina Andrews from David Prosten & Sarah Flynn
- ♥Ruth & Ernest Augat from Gretchen Reilly
- ♥Earl, Lily & "Wiggy" Biscoe from Eloise Biscoe
- ♥Cally & Vic Bissonnette from Kathryn Paine
- ♥Tony Casso from Joseph & Jean Sanger
- ♥Josiah M. Church from Ron & Nancy Church
- ♥Bruce Dobberteen from Lisa Dobberteen
- ♥Betty Eaton from Stace Beaulieu
- ♥John R. Erickson from Robert & Jessica Whritenour
- ♥Dan Fishman from Susan Fishman
- ♥Michele Hardman from Wendy Bone
- ♥Jack & Claire Johnson from Jim & Leslie McDonald
- ♥Kermit and Dory from Nancy Boston
- ♥Nasir A. Khan, MD from Kay Khan
- ♥M. King & E. J. McKeon from William & Elizabeth McKeon
- ♥Douglass Marlow from Linda DeYoung, Joe Goodman & Michele Heist
- ♥Shirley McIntire from Bob McIntire
- ♥Joseph & Augusta Medeiros from Jay & Susan Zavala
- ♥Josephine Muller from Marion Herz
- ♥Shirley Nisbet from Ian Nisbet
- ♥Gwendolyn Panton from David & Judith Garshelis, Bradford Hutchenrider, Elizabeth Owens, Karen Richter & Paul Muldoon, Glenys Smith, Richard & Shirley Stewart, Brian & Anita Tucholke, William & Carleen Walsh, Cheryl Williams
- ♥Alice & Stanley Reynolds from Frank & Carolyn Reynolds
- ♥Margaret Ries from Marshall Ries, Jr.
- ♥Eric Rudd from Fran & Sue Smith and Gwen Panton
- ♥Amelie Scheltema from Emily Ferguson
- ♥Beth Schwarzman from Frank & Mardi Bowles
- ♥Gary Schwarzman from Pierre & Gisela Tillier
- ♥Joe & Mildred Seplowitz from Alexander & Judith Ziss
- ♥Edward H. Torres, Jr. from Claire Bisio
- ♥Carmela Toro from Ida Toro

### IN HONOR OF...

- ♥Mike Duffany from Ralph Herbst
- ♥Mary Mangelsdorf from Sarah Mangelsdorf & Karl Rosengren
- ♥Day Mount from Leonard & Patty Johnson
- ♥Dick Payne from Leonard & Patty Johnson
- ♥Chris Water's birthday from Natalie Mariano & Shelley Fenily
- ♥Priscilla Wynne, Malinda Mayer & Barbara Gaffron from Winnifred Woods

NON-PROFIT  
PRSRT STD  
U.S. POSTAGE PAID  
FALMOUTH, MA  
02540  
PERMIT #77



157 Locust Street  
Falmouth, MA 02540-2658  
(508) 540-0876 • fax (508) 457-6406  
www.300committee.org

### President

Thomas A. Stone

### Vice President

Anne-Marie Runfola

### Treasurer

Paula Yanni

### Clerk

Victoria Lowell

### Directors

Michael A. Duffany  
Susan Gardner  
Susanne Goodman Hallstein  
Leonard W. Johnson  
Day O. Mount  
Jo Ann Muramoto, Ph.D.  
Richard E. Payne  
Gregory Souza  
Adam Thomas  
Virginia Valiela

### Executive Director

Jessica Whritenour

### Director of Program Services

Lucy Helfrich

### Stewardship Coordinator

Alexandra Zollo

### Tax Exempt # 22-2659529

The 300 Committee is a private, non-profit land trust dedicated to preserving natural places in Falmouth for everyone to enjoy now and in the years to come.

Since 1985, The 300 Committee has taken a lead role to acquire treasured open space for conservation, recreation and water protection. In the last 33 years, more than 2,400 acres have been permanently protected through our efforts.

# Leaves

## Sheep Return to Peterson Farm

The 88-acre Peterson Farm is a gem among Falmouth's open space treasures. One of the oldest farms on Cape Cod, its beautiful fields are surrounded by trails. The property connects to Beebe Woods and is abundant with natural resources, including woodland, marsh and a pond. Deer, fox, coyote and other wildlife visit the fields in search of food, and otters live in the marsh. A huge variety of seasonal and migratory birds makes the farm a popular spot for birdwatchers.

When the farm was purchased by the Town in 1998, T3C raised \$1 million toward the \$3 million price. Over the last 20 years, T3C has maintained a vested interest in the land, with staff and volunteers helping with dozens of stewardship projects there. Sheep grazed in the farm's pastures, keeping the fields "mowed" and preserving the open field habitat; springtime lambs attracted visitors from near and far. Things changed in the fall of 2016 when shepherd Sue Schoen, a local veterinarian who lived near the farm, moved to western Massachusetts and took her flock with her. Over the last year and a half, T3C has been anxiously awaiting the selection of a new tenant by the Town Conservation Commission. This spring, Falmouth residents Simon Thorrold and Diana Wickman are launching a new venture to bring sheep back to the farm. Their agreement with the Town allows them to graze sheep there in exchange for maintaining the farm and keeping the pastures open.

Simon recently shared the farm plans with T3C. "We will have our first sheep arriving the week of May 7. They are Katahdins, and are hair sheep, which means they don't need to be sheared... They are open yearlings and so no lambs for the farm this year, but we plan on lambing in early April 2019. So a world of cuteness coming our way then! We may add some wool sheep to the flock a little later in the year—possibly weaned lambs—once grass growth kicks in. We hope to grow the flock to about 30 ewes over the next couple of years, which is about the size of the flock that Sue had. We will also be using the sheep to train border collies as Sue had done. We are looking at ways to engage the public once we are up and running, perhaps with sheep dog demonstrations, etc. Other animals on the farm will include a llama and chickens to help build soil quality."

T3C is eager to support Simon and Diana in any way we can to help ensure the success of the Farm.



*A changing of the guard: Sue Schoen and Simon Thorrold visited Peterson Farm together in April to compare notes on sheep, dogs and other farm-related topics.*



## Accessible Trail Expansion Underway at Two Ponds Conservation Area

When the 189-unit Atria Woodbriar Place on Gifford Street was permitted, land was required to be set aside as open space as a condition of the 40B development. In 2014, Atria Woodbriar donated 14.75 acres to T3C to be permanently protected. Very close to downtown Falmouth, this parcel includes a rare Atlantic white cedar swamp, diverse groves of mature trees, and frontage on Jones and Sols Ponds, hence the name Two Ponds. A Conservation Restriction (CR) on the property is held by The Compact of Cape Cod Conservation Trusts, which secures additional protection for the land.

The property already includes a pathway that is accessible to wheelchairs and available for public use, with several benches set on a wooded knoll to allow visitors to enjoy views of the ponds. T3C has embarked on an extensive public access improvement project that will expand the existing trail system: lengthening the wheelchair accessible pathway, building two elevated boardwalks, installing interpretive signage, and creating an upper wetland loop hiking trail. Currently, Two Ponds features 390 feet of accessible pathway. T3C plans to extend the total pathway length to 2,635 feet; 955 feet will meet federal trail accessibility guidelines.

When T3C acquired the land, we removed remnants of boardwalks left over from the old Woodbriar golf course. The new boardwalks will be installed where the old boardwalks existed: over a 160-foot span of Jones Pond and an 80-foot span across the Atlantic white cedar swamp. The longer boardwalk will be accessible and will include a bump-out pond viewing area, with an educational exhibit mounted nearby that will highlight the special environmental features unique to the white cedar swamp.

The Two Ponds project will (1) create more passive recreation and education opportunities at this protected waterfront parcel so that every visitor can enjoy and appreciate its natural beauty, and (2) establish new accessible elements that will broaden the outdoor experience. With its proximity to schools, businesses and in-town neighborhoods, we expect that a wide range of trail users will frequent Two Ponds. Through-hikers can complete the entire loop, and all visitors can enjoy the parcel to the pond/cedar swamp overlook on the accessible boardwalk. A friend of T3C has generously supported this project and we have submitted grant requests to help complete the funding. Our hope is to begin construction in early 2019.



Yellow-rumped Warbler

Blue-headed Vireo

Palm Warbler

## Spring Birding

Many birds are now migrating through our area. Those returning to nest here include Common Yellowthroat, Blue-winged Warbler, Blue-gray Gnatcatcher and Warbling Vireo. But we are also fortunate to see a wide range of other species that nest north of us. Migrants that are just passing through include Palm Warbler, Blackburnian Warbler, Yellow-rumped Warbler and Blue-headed Vireo. Keep your eyes open! Some of these species have been spotted during our Migration Monday bird walks.



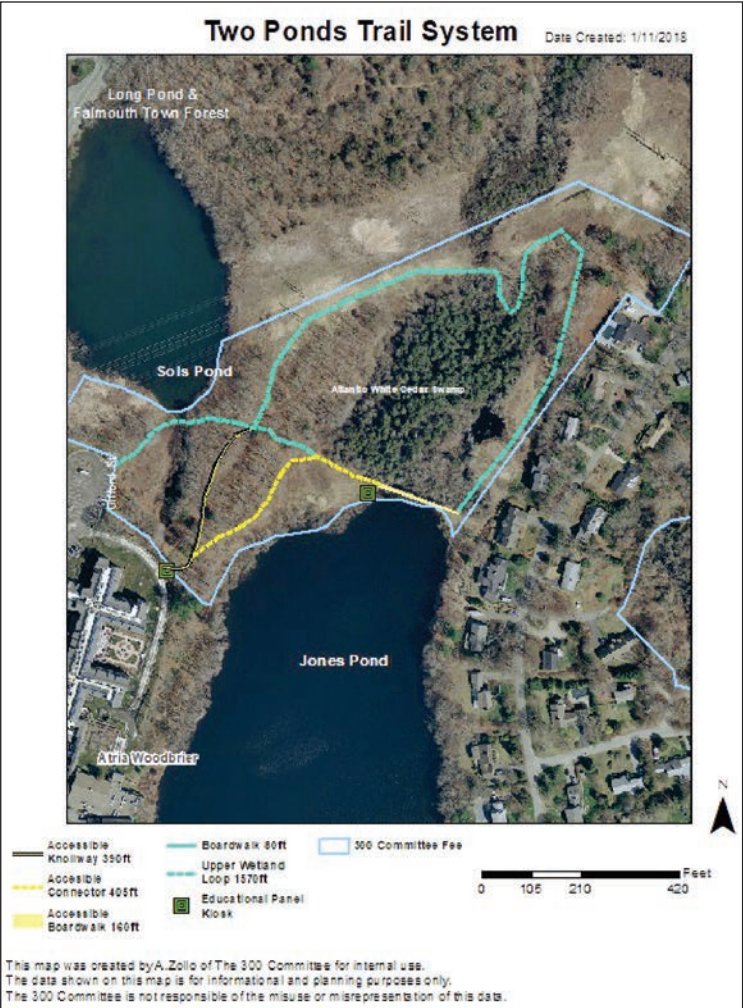
Blackburnian Warbler

Update and photos by Mike Tucker

## News Flash!

The Two Ponds Conservation Area has grown by 2 acres with a March 2018 gift of land to T3C. We are grateful to **Lawrence-Lynch, Inc.** for the donation of this vacant parcel that fronts on Gifford Street and Sols Pond.

Aerial view of Two Ponds Conservation Area showing trails and proposed new accessible features.



## Kelly Woodland Offers a New Entrance to Beebe Woods & Flume Pond

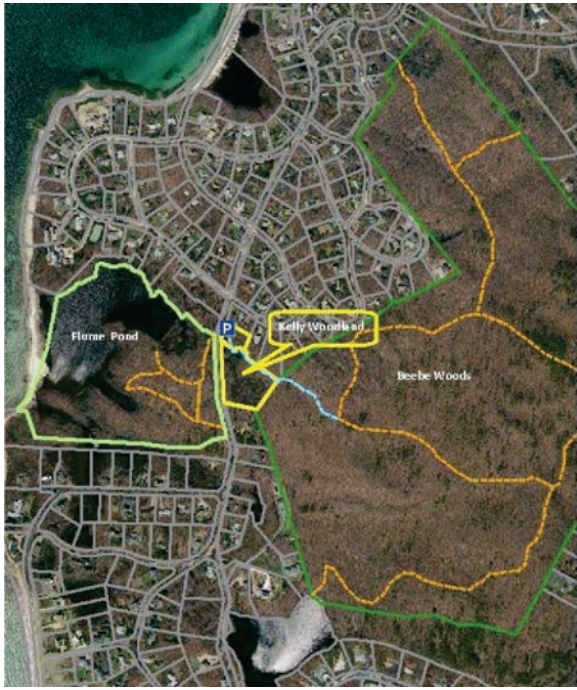
At the end of March, public access to Beebe Woods from Sippewissett Road became a reality. The Kelly Woodland is now open and being enjoyed by many, including neighbors, dog walkers and hikers intent on exploring new territory. A lovely new trail winds from the small unpaved parking area across a stone wall and gently uphill to link to the existing Beebe Woods trail network. Entering the northwestern or “back 40” section of the Woods, this trail leads to parts of Beebe Woods that are less known and not as frequently traveled.

Twenty-three boy scouts and other volunteers contributed 155 man hours in a single day to complete the public access initiatives on the property: cutting the new trail; installing the property sign and informational kiosk; clearing the trails across the street and along the road edge at Flume Pond; building and installing a wooden bridge over a wet gully. Coordinating his project with T3C, Falmouth High School senior Troy Otter, Boy Scout Troop 38 North Falmouth, led this service project to fulfill his Eagle Scout requirements.

The idea that Beebe Woods, one of Falmouth's most visited conservation areas, should have an entrance on the western, Buzzards Bay, side, was long championed by T3C and the Sippewissett Association. After years of watching and waiting for the “right” parcel to become available, T3C and the Buzzards Bay Coalition together were able to purchase a 0.5-acre lot at 318 Sippewissett Road from Mary Ella Kelly and her son, Bill Kelly, in June of 2016. With this sale came the donation of an adjacent 2.6 acres—mostly wetland—that the Kelly family also wanted to protect.

Officially named the “George Fleming Kelly and Mary-Ella Beetham Kelly Woodland” this lovely new conservation land, though small, has a huge impact: it creates an open space link from the Flume Pond Conservation Area up and over the Falmouth Moraine through Beebe Woods and across to Peterson Farm, creating a broad swath of more than 500 permanently preserved acres.

Among the Kelly Woodland's features, a large boulder stands at the beginning of the new trail. Engraved with “Mizell/Hoskins Trailhead” the boulder honors Merle Mizell and Hartley Hoskins, two Sippewissett neighbors who were major supporters of the project. Soon a brass plaque will be mounted on the kiosk in tribute to the Kelly family: “May Peepers Sing their Chorus Forever.”



An aerial view shows the Kelly Woodland as it links Flume Pond with Beebe Woods. The new trail (shown as a blue dashed line) connects to existing trails (in orange).



Boy scouts led by Eagle Scout candidate Troy Otter (top row, center) take a break on the trailhead boulder at the new Kelly Woodland as Hartley Hoskins looks on.

## Changes to T3C By-Laws

In order for us to make changes to the by-laws, we must inform the membership in advance of the vote. Any proposed changes will be voted at the Annual Meeting on July 19. Modifications in the works include the following:

- Change “Administrator” to “Executive Director” throughout the document;
- Change “Secretary” to “Clerk” throughout;
- In Article IV, Section 6. Voting: add the wording in bold-faced type: “All matters before the Board of Directors shall be approved by majority vote of Directors present at any meeting of the Board at which a quorum is present **except that the Board may adopt policies that require a super-majority for certain specified matters.** For the purposes of this Section, the term “present” may include participation in the meeting via conference call.
- In Article V: Section 2. Election: (2<sup>nd</sup> paragraph) Change third sentence to read: “In the event of a vacancy in an officer position at another time, the Board Development and Nominating Committee may nominate a candidate to an officer position at a regular or special meeting of the Board of Directors.”

If you would like to view the entire T3C bylaws with the proposed revision, visit 300committee.org or call the office to receive a hard copy (508-540-0876).

## Hats off to T3C's trail crew

From August through April, our dedicated trail crew led by Charlie Peterson has conducted 19 work days on 12 conservation properties, totalling more than 250 hours clearing trails all over Falmouth. Late in the season extra sessions were scheduled to clear fallen trees after the rash of late winter/early spring storms. T3C truly appreciates this enormous contribution of time and effort!



April 19, Before: T3C's trail crew faced a wall of trees blocking a trail at the Tavares parcel, at the eastern end of the Mares Pond/ Spectacle Pond Reservation.



April 19, After: What the trail crew accomplished!

## AmeriCorps Member Serves with T3C

T3C is pleased and honored to have Barnstable County AmeriCorps Cape Cod member Taryn Szalay serving with us this year, organizing and creating baseline documentation for all of our fee-owned properties. Taryn, who hails from Ohio, graduated in 2017 from the College of Wooster with a degree in Biology. Poring over hundreds of paper and electronic



documents, she has been actively cataloging our parcel files so we can have a record of changes over time. Through this joint placement with the town, Taryn is also working with the Falmouth Conservation department to update their land management plans and to tackle additional land management initiatives.

## We are grateful!

Since our last newsletter, T3C has been awarded several grants that provide vital support for our work. We have also received a donation of land (see News Flash, page 2). Huge thanks to:

**The Falmouth Fund** of the Cape Cod Foundation for a grant to support the comprehensive update of our Falmouth Conservation and Recreation Map.

**The Fields Pond Foundation** and the **Edward Bangs Kelley and Elza Kelley Foundation** for their support of the Andrews Farm and adjacent Coonamessett River land acquisitions.

The **Falmouth CPFund**, whose major grant from community preservation funds made the Town's purchase of Tony Andrews Farm possible.

The **Massachusetts Conservation Partnership** and **LAND grant programs** for reimbursement funds for the Andrews land acquisitions.

## Outreach Does it Again

T3C's Outreach Committee enthusiastically continues to plan walks, talks and other events that help spread the word about T3C and engage members of the community.

• In March, T3C hosted a “**friend raiser**” and **dance party at Grumpy's Pub**, with live music by the crowd-pleasing local band Puffy Elvis. \$1,500 in contributions to T3C were collected at the door and donated by the band. Special thanks to Outreach member Stephanie Madsen who headed up this fun event, and all the members of Puffy Elvis!

• The **Winter-Spring Speaker Series** lineup featured fascinating talks on Atlantic sturgeon in the Hudson River, the care of sick and injured wild animals, new thinking about cranberry farming, how climate change is affecting birds, and wildflowers in forests and meadows. We thank our wonderful speakers: John Madsen (University of Delaware), Stephanie Ellis (Wild Care), Chris Neill (Woods Hole Research Center), Joan Walsh (Mass Audubon) and Ted Elliman (New England Wildflower Society), our presentation partner, Salt Pond Areas Bird Sanctuaries and our host, Falmouth Museums on the Green, who all helped make this another successful series.

• T3C's **Earth Day Celebration** with the Woods Hole Research Center attracted more than 100 people to a family program about plastics pollution followed by a very productive roadside and beach cleanup at Surf Drive. Once again T3C's Outreachers provided terrific support for this event.



The road and beach at Surf Drive were scoured for trash by dozens of volunteers who participated in the Earth Day cleanup co-hosted by T3C and the Woods Hole Research Center. A huge amount of trash was collected and hauled away.